

[View in browser](#)

Community. Advocacy. Changes. Belonging.



There has been a lot happening nationally that directly affects disabled Australians, families, carers, neurodivergent communities, and grassroots organisations like GRANN.

This month, we wanted to pause and share some reflections on the recent Senate hearings into proposed changes to the National Disability Insurance Scheme. Because policy conversations happening in Canberra do not stay in Canberra.

They shape everyday lives.

And our community deserves to understand what is happening.

The Senate hearings reminded us of something important.

Disability policy often asks:

Can families do more?

A more important question may be:

What happens when families are already doing everything they can?

Or perhaps:

At GRANN, we believe communities should be built around care, dignity, access, and belonging.

Not assumptions about invisible labour.

And certainly not policies built on the idea that disabled people should simply need less.

We will continue watching these reforms closely.

And we will continue advocating for communities where everyone belongs.

But this month also asks us to hold something bigger.

June is Pride Month.

A time that reminds us that identity has never existed in neat categories, and that liberation movements have always been deeply interconnected.

Within Pride Month, our communities also recognise **Neurodiversity Pride Day (16 June)** and **Autistic Pride Day (18 June)**, two important moments that remind us that neurodivergence is not separate from the broader conversation around identity, access, belonging, and justice.

Because disability justice has always required intersectionality.

And neurodivergent communities have always existed across race, culture, queerness, gender diversity, socioeconomic difference, and every other space where systems have historically decided who belongs and who does not.

At GRANN, we do not see neurodivergence through a deficit lens.

We understand neurodiversity as a natural part of human variation.

And we know that meaningful inclusion only happens when we recognise that our experiences never exist in isolation.

The intersections matter.

Always.

Settling Into Winter Together

As we ease into a Queensland winter, we know seasonal change can affect each of us differently.

For some, cooler weather brings comfort, softer sensory environments, and a welcome shift in pace.

For others, winter can bring disrupted routines, lower energy, increased chronic pain, sensory discomfort, illness, burnout, executive functioning challenges, or simply the extra effort of navigating shorter days and changing rhythms.

At GRANN, we know wellbeing is never one-size-fits-all.

Preparing for winter is not about productivity or pushing through.

Sometimes it is about noticing what your body, mind and nervous system need as the season changes.

To support you through this seasonal transition, check out our **Sensory Seasonal Wellbeing Checklist** 🍂

A gentle resource designed to help you think about your own sensory needs, regulation strategies, comfort supports, routines, and ways to care for yourself as winter settles in.

We invite you to check it out, adapt it for your own needs, and explore what helps you feel safe, regulated, and supported this season.

But we would also love to hear from you.

What helps you manage what winter throws your way?

Do you have favourite sensory comforts?

Go-to regulation strategies?

Winter routines that help make the colder months easier?

Send us your ideas, tips, rituals, and winter wisdom so we can continue learning from each other and building community knowledge together.

Because sometimes the best supports are not found in systems.

Sometimes they are found in shared experience.

Stay warm, be gentle with yourself, and remember:

You do not have to navigate the season alone.

As the year moves forward, here is your reminder that you are allowed to:

Rest without earning it.

Change your mind.

Communicate differently.

Need support.

Move slowly.

Say no.

Take up space.

Exist without performing normality for the comfort of others.

And you do not need permission.

Why Grassroots Spaces Matter

As systems continue to shift around us, we are reminded why community-rooted spaces matter so deeply.

GRANN was never built from funding structures, corporate frameworks, or institutional models.

It was built from lived experience.

From recognising the gaps that formal systems often leave behind.

And from understanding that some of the most meaningful forms of support are created when communities begin caring for one another directly.

Sometimes change begins in policy.

Sometimes change begins in relationship.

We believe both matter.

Community Was Never Meant To Be Transactional

At GRANN, you might start to hear us speak more about mutual aid.

Not charity.

Not hierarchy.

Not service delivery alone.

Mutual aid reminds us that communities thrive when support moves sideways rather than only from institutions downward.

Sometimes helping looks like sharing knowledge.

Sometimes it looks like listening.

Sometimes it looks like simply making sure another person knows they are not alone.

All of it matters.

In solidarity.

Always.

The Collaborators @ GRANN 🌿



Senate Inquiry into the NDIS (Future Generations) Bill

What Just Happened?

Over **9, 10 and 11 June**, the Senate Community Affairs Legislation Committee held hearings into the proposed:

National Disability Insurance Scheme Amendment (Securing the NDIS for Future Generations) Bill 2026

The Federal Government says these reforms are needed to make the NDIS financially sustainable long-term.

Over three days, the Committee heard evidence from:

- disability organisations
 - advocates
 - legal experts
 - researchers
 - clinicians
 - families
- disabled people
- commissioners and policymakers.

While many agreed that the NDIS needs improvement, serious concerns were raised about what these changes could mean in practice.

The Big Debate

Sustainability... But At What Cost?

The Government's position is relatively simple:

The NDIS is growing quickly and costs need to be controlled to protect the future of the scheme.

Most witnesses did not disagree.

But many raised an important question:

What happens when reducing costs inside the NDIS simply moves those costs somewhere else?

Because disability support needs do not disappear simply because funding disappears.

When formal supports are reduced, the burden often shifts to:

- parents
- unpaid carers
- siblings
- community organisations
- emergency departments
- mental health services
- housing systems
- disabled people themselves.

A cheaper system is not automatically a better system.

A Quiet Shift In How Disability Is Being Understood

One of the biggest concerns raised during the hearings was philosophical.

Some experts argued the reforms appear to move away from the idea that disability is created partly by barriers in society.

Instead, there were concerns the system may increasingly focus only on impairment and what a person cannot do.

This matters.

Because disability support should not simply be about managing deficits.

It should also be about enabling participation.

Participation in:

- work
- education
- relationships
- creativity
- community life
- independence.

The Return Of Family Responsibility

A major theme across the hearings was growing reliance on “informal supports.”

In simple terms:

The idea that families should do more.

Government representatives argued that parents should continue doing what any parent normally does, with the NDIS only funding disability-specific needs.

The concern raised by many witnesses was this:

Disability often changes what parenting looks like.

Families may already be providing:

- intensive emotional support
- communication assistance
 - personal care
 - advocacy
- constant supervision
- behavioural support
- complex care coordination.

For many families, there is no extra capacity left to give.

But What If There Is No Family?

One issue that received far less attention than it deserved:

What happens when there is nobody available to step in?

Many policy discussions assume the existence of:

- parents
- carers
- family supports
- community networks
- informal supports.

But many disabled people:

- live alone
- are estranged from family
- have ageing carers
- have no reliable support networks
- have parents who can no longer provide care.

The question remains:

What happens when policy assumes support exists... but it doesn't?

Foundational Supports

Promise Or Placeholder?

The Government has repeatedly pointed to **Foundational Supports** as part of the future disability system.

These are supposed to be community-based supports outside the NDIS.

The problem?

Many witnesses noted these systems do not currently exist at the scale being promised.

There are still unanswered questions around:

- funding
- workforce availability
- access in rural areas
- consistency between states
- timing of implementation.

People are understandably concerned about losing existing supports before alternatives are actually available.

Why GRANN Is Paying Attention

At GRANN, we see something policymakers often do not.

We see what happens when systems assume people have capacity they simply do not have.

We know many disabled people are already navigating:

- burnout
- chronic illness
- poverty
- inaccessible systems
- social isolation
- unsupported caregiving responsibilities.

We know community spaces matter.

And we know what happens when support systems disappear before replacement systems exist.

We believe sustainability conversations matter.

But sustainability cannot come at the cost of dignity, autonomy, participation and belonging.

To read GRANN's initial analysis of the Committee Hearing and GRANN's submission to the NDIS Amendment (Securing Future Generations) Bill 2026 Inquiry, visit:

[Blog | Gladstone Region Autistic & Neurodivergent Network Inc.](#)

Further Reading:

Official Government Sources

- [NDIS Amendment \(Securing the NDIS for Future Generations\) Bill 2026](#)
- [Explanatory Memorandum](#)



Pride, Neurodiversity, and Why We Do What We Do

This month, alongside Pride Month celebrations around the world, our communities recognise two deeply important dates.

Neurodiversity Pride Day — Tuesday 16 June

Autistic Pride Day — Thursday 18 June

And while these days deserve celebration, they also deserve understanding.

The concept of **neurodiversity** was adopted from community in the late 1990s and supported by such proponents as Australian sociologist **Judy Singer** to challenge the idea that neurological differences should automatically be understood as disorders to be corrected.

The Neurodiversity Paradigm, theorised by Nick Walker, reminds us that brains are not designed around a single “correct” way of thinking, feeling, learning, communicating, or existing.

Autism.

ADHD.

Dyslexia.

Dyspraxia.

Tourette Syndrome.

Intellectual Disability.

Acquired neurodivergence through dementia, brain injury, trauma, chronic illness, or neurological change.

Human minds have always existed in extraordinary variation.

But here is what matters most.

Neurodivergence never exists in isolation.

Many disabled people navigate racism, poverty, cultural exclusion, gender discrimination, inaccessible systems, and communities that continue to reward conformity over authenticity.

This is why intersectionality matters.

And this is why GRANN exists.

We believe in **neuro-affirming practice**, but also in what some communities call **neuroqueering**.

The intentional act of questioning the systems that tell us there is one correct way to think, communicate, behave, learn, socialise, create relationships, or exist in the world.

Neuroqueering asks us to challenge the structures that reward sameness.

It invites us to imagine communities where difference is not tolerated.

But expected.

Valued.

Protected.

Celebrated.

Research consistently shows that neurodivergent individuals experience significantly higher rates of mental health distress, unemployment, educational exclusion, discrimination, and social isolation.

Not because neurodivergence is inherently broken.

But because environments continue to be built around narrow assumptions of what a human being should look like.

Research indicates that LGBTQIA2S+ autistic individuals experience significantly higher rates of mental health distress compared with both neurotypical and non-queer peers, highlighting why intersectionality cannot be separated from disability justice.

Research also suggests autistic adults experience unemployment rates as high as **70 to 80 percent globally**, not because autistic people lack capability, but because workplaces continue to privilege narrow definitions of communication, productivity, and social behaviour.

At GRANN, we believe language helps shape reality.

The Words We Choose Matter.

How we speak about disability, autism, neurodivergence, support needs, behaviour, identity, and belonging directly influences how people experience themselves and how society chooses to respond.

This is why neuro-affirming language matters.

Because people should never have to be reduced to deficit-based narratives in order to be understood.

Words build worlds.

And we are intentional about the worlds we are building.

At GRANN, our work has never simply been about supports, advocacy, or workshops. It has always been about changing the conditions that make support necessary in the first place.

Building community where belonging is not conditional.

Creating spaces where people do not have to mask themselves to be accepted.

And working toward futures where difference is no longer treated as something requiring permission.

So this month, we celebrate Pride in all its forms.

The pride of knowing yourself.

The pride of refusing harmful systems.

The pride of existing authentically.

And the quiet revolution of building communities where everyone gets to belong exactly as they are.

That has always been the heart of our work.

And it always will be.



GRANN Is Continuing Work On...

GRANN is currently developing **NeuroPathways: WorkLab to Employment** -

a neuro-affirming, strengths-based program exploring work, job crafting, self-employment, workplace navigation, and sustainable pathways for Autistic and otherwise Neurodivergent people.

This project is a passion project of GRANN CEO bee austin, a psychosocial recovery coach and soon-to-be rehabilitation counsellor, developed from both lived and professional experience navigating the gaps many Autistic and otherwise Neurodivergent people face in traditional employment systems.

The program is being built around a simple but important idea:

We do not “fix” people to fit jobs. We shape work to fit people.

NeuroPathways aims to explore more sustainable, ethical, culturally safe, and neuro-affirming employment pathways, including:

- Job crafting
- Self-employment and micro-enterprise
- Energy-aligned work
- Workplace navigation and advocacy
- Strengths-based approaches to work identity and participation

We are still refining the program and would love to gauge interest from the community. We would especially love to hear from:

- Community members who may be interested in participating
- Practitioners, peer workers, educators, or employers interested in contributing ideas and knowledge
- People interested in helping co-design or deliver parts of the program
- Organisations or businesses able to offer in-kind support, materials, spaces, mentoring, or collaboration

Another world is possible.

We are trying to build it together.

If this sounds like something you'd like to be involved in, we'd love to hear from you.

Email GRANN to get in touch and register your interest, or complete the relevant form or survey via the link below:

[*Advisory Committee EOI Form*](#)

[*Community Co-Design Survey*](#)



Help Keep GRANN Growing



GRANN continues operating as a grassroots, Neurodivergent-led organisation building affirming spaces for disabled and neurodivergent people.

Like many grassroots organisations, GRANN continues to operate through significant behind-the-scenes labour, care work, advocacy work, and countless unseen hours.

Small community organisations are often asked to hold extraordinary amounts of work with very limited structural support.

We continue because community matters.

And because we believe the work itself matters.

Right now, sustainable community care needs community support.

Ways to support:

- Attend a session
- Share our work
- Partner with us
- Donate if you can
- Provide mutual aid
- Become a member
- Sponsor accessible community programs
- Help us amplify disability-led innovation.

We are not working toward inclusion into broken systems.

We are working toward entirely new ways of belonging.

Because belonging and inclusion should never depend on profitability.

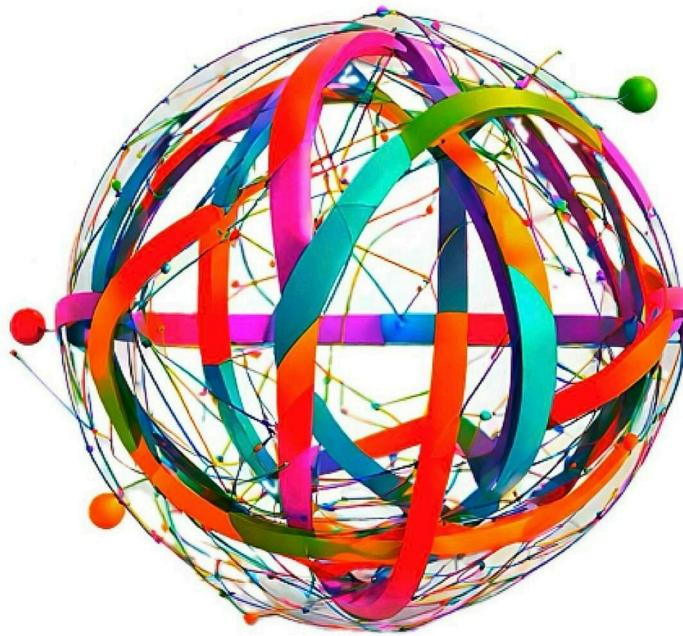
Thank you for continuing to walk alongside us.

[Donate](#)

[Become a Member](#)



This Is Me: NeuroKind Circles
Neurodivergent-Led & Supported Sessions



Current NeuroKind Circles: June - August

GRANN is excited to be facilitating a variety of new '**This Is Me: NeuroKind Circles**'
– **Neurodivergent-Led & Supported Sessions** between June - August.

These gentle, low-pressure online creative and interest-based sessions are designed for Autistic and Neurodivergent people, with a focus on connection, autonomy, sensory consideration, and community without obligation.

Current circles include:

Shadow Play & Puppets – *Light & Shape*

Parallel Play – *Air-Dry Clay Edition*

Online Community Connection Sessions: Group session - free

Paid individual Body Doubling and Parallel Play sessions also available
and still to come:

Vision Board Pin-Ups – *Pieces That Pull*

No experience is needed, and many sessions are designed with flexible participation and low-demand engagement in mind.

Dates, session details, and registration information is available via:

[GRANN Website](#)

We're looking forward to sharing these spaces with community.

Online Community Connection Sessions

Our blend of Body Doubling, Parallel Play, & Special Interests.

Gently held online Neurodivergent-led and supported sessions.

An online supported connection space where participants can:

Work alongside others quietly

Share special interests if desired

Engage in body doubling

Infodump safely

Draw, game, craft, study, organise, or simply exist together

Use chat, voice, cameras-on/off, or passive participation

Optional themed sessions may include:

Gaming & chill

Hyperfocus hangouts

Craft-along sessions

Study & task support

Comfort media chats

Creative play

Community-led, low-demand, and entirely flexible.

You can join with your camera off, bring a task (or not), sit in silence, stim, share, or just exist alongside others who get it.

 Come as you are. Stay as you need.

Cost: Free (Paid Individual sessions available)

Format: Online

Dates: June - August

**Online event will be held via Zoom or Jitsi. TBD.*

(GRANN has experienced recent complications with Google Teams)

Access link will be delivered via email before the event.

Online Community Connection Sessions

These sessions are community-led, flexible, and low-demand.
Come as you are.
Engage however you feel comfortable.



Email ✉ info@grann.com.au
Visit 🌐 <http://www.grann.com.au>



Date	Session	Format	Suggested Time
Sunday 7 June	Community Connections: Mindwaves & Tangents Hyperfocus Hangout	Online	2:00pm – 4:00pm
Sunday 14 June	Community Connections: Mindwaves & Tangents Special Interests Nook	Online	2:00pm – 4:00pm
Sunday 21 June	Community Connection: Doom Boxes Body Doubling Session	Online	2:00pm – 4:00pm
Sunday 28 June	Community Connection: Game & Chill Parallel Session	Online	2:00pm – 4:00pm
Sunday 5 July	Community Connection: Mindwaves & Tangents of Many Minds	Online	2:00pm – 4:00pm
Sunday 12 July	Community Connection: Glimmers & Pebbles Infodump Lounge	Online	2:00pm – 4:00pm
Sunday 19 July	Community Connection: Study, Task & Body Doubling Session	Online	2:00pm – 4:00pm
Sunday 26 July	Community Connection: Creative Minds Parallel Play Session	Online	2:00pm – 4:00pm
Sunday 2 August	Community Connection: Mindwaves & Tangents Pop Culture & Comfort Reels	Online	2:00pm – 4:00pm
Sunday 9 August	Community Connection: Mindwaves & Tangents of Many Minds	Online	2:00pm – 4:00pm
Sunday 16 August	Community Connection: Mindwaves & Tangents, Chats & Snacks Catch-up	Online	2:00pm – 4:00pm
Sunday 23 August	Community Connection: Mindfulness & Reset Body Doubling Session	Online	2:00pm – 4:00pm
Sunday 30 August	Community Connection: Read & Chill Parallel Play Session	Online	2:00pm – 4:00pm





Register

New!

Parallel Play – (Air-Dry) Clay Edition

Join us online for a relaxed, low-demand creative session where you can simply *be* - no pressure to talk, share, or perform.

These circles are grounded in:

-  **Autonomy** – participate your way
-  **Low demand** – no expectations
-  **Curiosity** – create without judgement
-  **Community** – connection that feels safe

Session details:

 Online

🕒 60 minutes

🌟 Free

📅 July 17 Dates: June to August

**Online event will held via Jitsi Zoom.*

(GRANN has experienced recent complications with Google Teams)

Access link will be delivered via email before the event.

Bring some air-dry clay (or play-dough, slime, or anything tactile) and let your hands wander. You might sculpt, fidget, or just observe — all forms of participation are welcome.

This is **parallel play**: being alongside others without social pressure.

Camera on or off, talking optional - your presence is enough.

Sometimes connection looks like conversation.

Sometimes it looks like a quiet piece of clay taking shape in your hands.

Facilitated by GRANN

COMING SOON **CLAY** 

This Is Me: NeuroKind Circles
The Squish & Sculpt Clayground
Parallel Play - (Air-Dry) Clay Edition

WELCOME TO NEUROKIND CIRCLES, A SPACE WHERE AUTISTIC AND NEURODIVERGENT PEOPLE CAN SPEND TIME TOGETHER ONLINE WITHOUT THE PRESSURE TO PERFORM SOCIALLY.

SOMETIMES CONNECTION LOOKS LIKE CONVERSATION.
 SOMETIMES IT LOOKS LIKE A QUIET LITTLE LUMP OF CLAY SLOWLY BECOMING SOMETHING UNDER YOUR HANDS.

FOR THIS SESSION, WE'RE GATHERING ONLINE WITH AIR-DRY CLAY AND LETTING OUR HANDS DO THE WANDERING.

NO ARTISTIC EXPERIENCE REQUIRED.
 NO EXPECTATIONS.
 NO "SHOW AND TELL" UNLESS YOU FEEL LIKE IT.
 JUST PEOPLE, CLAY, AND A BIT OF SHARED CREATIVITY.

60 mins

THESE CIRCLES ARE BUILT AROUND A FEW AFFIRMING IDEAS:

- AUTONOMY - YOU CHOOSE HOW YOU PARTICIPATE
- LOW DEMAND - NO PRESSURE TO TALK OR SHARE
- CURIOSITY - CREATIVITY WITHOUT JUDGEMENT
- COMMUNITY - CREATING WAYS OF BEING TOGETHER THAT FEEL SAFE

SESSION DETAILS:

- ONLINE. BOOK VIA HUMANITIX (ZOOM LINK PROVIDED AFTER REGISTRATION)
- TIMES AND DATES LISTED @ HUMANITIX
- COST: FREE
- DURATION: APPROXIMATELY 60 MINS

FACILITATED BY GRANN



Parallel play, but online
 This means we're doing something side-by-side without social pressure.
 Your camera can be:

- on or off
- pointed at your clay, pointed at the ceiling, or nowhere at all.

Talking is optional. Listening is optional.
 Being present in your own way is enough.
 Some people like chatting while they create. Some prefer silence.
 Both are completely welcome.

If you'd like to sculpt along, you might bring:

- air-dry clay
- a small cup of water
- simple tools (toothpicks, forks, butter knife, pencil)
- a cloth or tray to work on

But you can also join with:

- play-dough
- blu-tack
- slime
- kinetic sand
- or nothing at all.

Watching counts too.

You might:

- roll it
- flatten it
- make tiny creatures
- make abstract shapes
- fidget with it
- sculpt something meaningful
- or simply enjoy the texture

There's no right way to clay.

Sensory notes:
 Air-dry clay can feel:

- cool
- slightly gritty
- soft when kneaded
- firm and hard as it dries

If clay textures aren't your thing, feel free to stin, draw, knit, doodle, or simply hang out.

By the end of the session you might have:

- a tiny sculpture
- a strange creature
- a wonky bowl
- a pocket stone
- or just a pleasantly squished piece of clay.

All outcomes are excellent outcomes.

FACILITATED BY The Gladstone Region Autistic & Neurodivergent Network Inc. - GRANN

Contact GRANN via email to register your interest: info@grann.com.au

Free

The Wonky Clay Jam Club

60 mins

Tiny Creatures & Other Questionable Sculptures





Date	Session	Format	Suggested Time
Saturday 6 June	The Squish & Sculpt Clayground	Online	10:00am – 12:00pm
Saturday 20 June	The Squish & Sculpt Clayground: Tiny Creatures Edition	Online	10:00am – 12:00pm
Saturday 4 July	The Squish & Sculpt Clayground	Online	10:00am – 12:00pm
Saturday 18 July	The Squish & Sculpt Clayground: Texture Lab	Online	10:00am – 12:00pm
Saturday 1 August	The Squish & Sculpt Clayground	Online	10:00am – 12:00pm
Saturday 15 August	The Squish & Sculpt Clayground: Mini Worlds Edition	Online	10:00am – 12:00pm
Saturday 29 August	Our Community Celebration Clayground & Shadow Showcase	Online	10:00am – 1:00pm

[Register](#)

Light & Shape: Shadow Play and Puppets

A gentle, image-led creative session

An online, ND-led supported session exploring shadow play, puppetry, and storytelling through light, movement, and form.

This is not a performance or acting workshop.
There is no expectation to speak, perform, or tell a story.

The facilitator will demonstrate shadow play and puppet-making live, guided by participant input, shared themes, and quiet observation. You can participate by watching, experimenting, responding in chat, or simply being present.

Who This Session Is For:

Autistic and Neurodivergent people

Visual and sensory thinkers

People who enjoy movement, light, or tactile materials

Those who prefer minimal speaking or structured interaction

No experience needed.

Instead, this session invites participants to explore:

Shadows

Silhouettes

Movement

Shape and form

Simple puppets (felt, paper, or found objects)

What You'll Need

If you'd like to experiment alongside the session, you might use:

A light source (lamp, torch, phone light)

Paper, cardboard, or your hands

Simple shapes or cut-outs

Felt or soft materials (optional)

Household objects to create shadows

You do not need any materials to attend.

You can also participate by watching only.

Cost: Free

Format: Online

Dates: June - August

**Online event will be held via Zoom or Jitsi. TBD.*

(GRANN has experienced recent complications with Google Teams)

Access link will be delivered via email before the event.

You're welcome to attend once, occasionally, or regularly.

Predictability is the container. Content is the variable.

Facilitated by GRANN

Belonging without pressure.



Date	Session	Format	Suggested Time
Saturday 13 June	Shadow and Shape	Online	10:00am – 12:00pm
Saturday 27 June	Shadow and Shape: Light Worlds	Online	10:00am – 12:00pm
Saturday 11 July	Shadow and Shape: Puppet Creatures	Online	10:00am – 12:00pm
Saturday 25 July	Shadow and Shape: Storytelling Shadows	Online	10:00am – 12:00pm
Saturday 8 August	Shadow and Shape: Shadow Stories	Online	10:00am – 12:00pm
Saturday 22 August	Shadow and Shape: Puppet Pathways	Online	10:00am – 12:00pm

Register

Expression of Interest

Hot Wheels Interest Group

GRANN is exploring the creation of a **Hot Wheels Interest Group** for Autistic and Neurodivergent people.

This group would be a relaxed, interest-led space for people who enjoy:

Hot Wheels cars

Collecting

Tracks and layouts

Design, sorting, or organising

Talking about favourite cars or themes

Or simply being around others who share the interest

No expertise is required.

You don't need to talk or participate in any specific way, or at all.

This Expression of Interest helps us understand:

Who might like to attend

Preferred days/times

Whether people are interested online, in-person, or both

There is **no commitment** by submitting an EOI.

Who is this for?

Autistic and Neurodivergent individuals

Support people are welcome

All ages welcome

If you have access needs or preferences, please share them if you feel comfortable to do so.

Register your interest or email GRANN at: info@grann.com.au



Thank you to those who have registered interest in the Hot Wheels Interest Group. We really appreciate you taking the time to let us know your interests.

We are again seeking Expressions of Interest in our Hot Wheels Interest Group in the hopes that we have an increase interest for children and young people 15 years of age and under.

*Thank you for your patience and understanding.
We'll be in touch if and when the group is able to move forward.*

[Register Interest](#)

***Autistic & Neurodivergent-led
Organisations, Supports, & Resources***



[Supports Signpost](#)

[GRANN Resources](#)



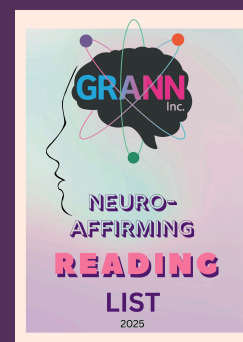
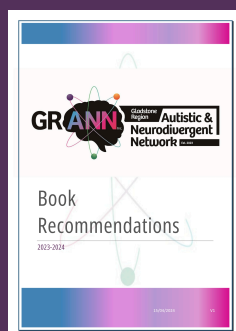
Autistic & Neurodivergent Books and Authors

Looking for stories that reflect *you* or someone you love? GRANN's carefully curated 2024 & 2025 Booklists includes powerful titles by and for Autistic and Neurodivergent people - spanning identity, advocacy, creativity, lived experience, children's stories, YA fiction, and more.

Whether you're seeking representation, learning, or just a good read that doesn't pathologise your existence, there's something here for you.

We are currently building our 2026 version to support the latest information, resources, and good reads out there for our communities.

If you have a good read to add to the list, please get in touch with us.



Want to Get Involved? Volunteer with GRANN

GRANN is powered by community - and we're always grateful for kind, creative, Neurodivergent-led hands to help shape what we do. Whether you're looking to contribute your time, skills, ideas, or presence, we'd love to hear from you.

Volunteering with GRANN can look like:

- 🖥️ Helping behind the scenes with admin or website content
- 🎨 Co-creating accessible resources or artwork
- 📣 Supporting events, workshops, or advocacy campaigns
- 🧸 Offering lived experience wisdom or gentle peer support

Lived experience needed and a willingness to show up in your own way.

Flexible, affirming, and low-demand roles available.
We'll always work with your access needs and capacity.

Register below or visit our website www.grann.com.au
and click "Volunteer" in the menu

You can also ✉️ Email us at: info@grann.com.au

🌈 Thank you for helping us build something meaningful and proudly Neurodivergent led.

📝 Register your interest to volunteer here:

[Volunteer EOI Form](#)

Your Views Matters

We'd Love Your Feedback

✨ **Share what's working. Tell us what's not. Suggest something new.**

At GRANN, everything we do is shaped by *you*, our community. Your experiences, insights, and ideas help us create spaces that feel safer, more supportive, and more *you-shaped*.

Whether you've joined one of our sessions, explored our website, or just want to share a thought, book idea, resource, or suggestion - we'd love to hear from you.

Your feedback doesn't have to be formal or polished. Honest, imperfect, and heartfelt is welcome.

Access the Feedback Form below
or visit us at www.grann.com.au
and click "Contact" in the menu.

Prefer to send a message directly or use voice, pictures, or dot points instead of a form?

That's okay too. Let us know how we can walk beside you.

✉ Email us at: info@grann.com.au

🧠 Your views helps us build a place to belong, together.
Thank you for being part of it.

📝 **Access our feedback form here:**

[Feedback Form](#)



Gladstone Region Autistic & Neurodivergent Network Inc.

[You've received this email because you've subscribed to our newsletter.](#)





GRANN acknowledges the Bailai, Gurang, Gooreng Gooreng and Taribelang Bunda people who are the traditional custodians of the land on which we reside and pay respect to Elders past, present and emerging. We extend that respect to all Aboriginal and Torres Strait Island people.

**Always Was. Always Will Be.
Sovereignty Was Never Ceded.**